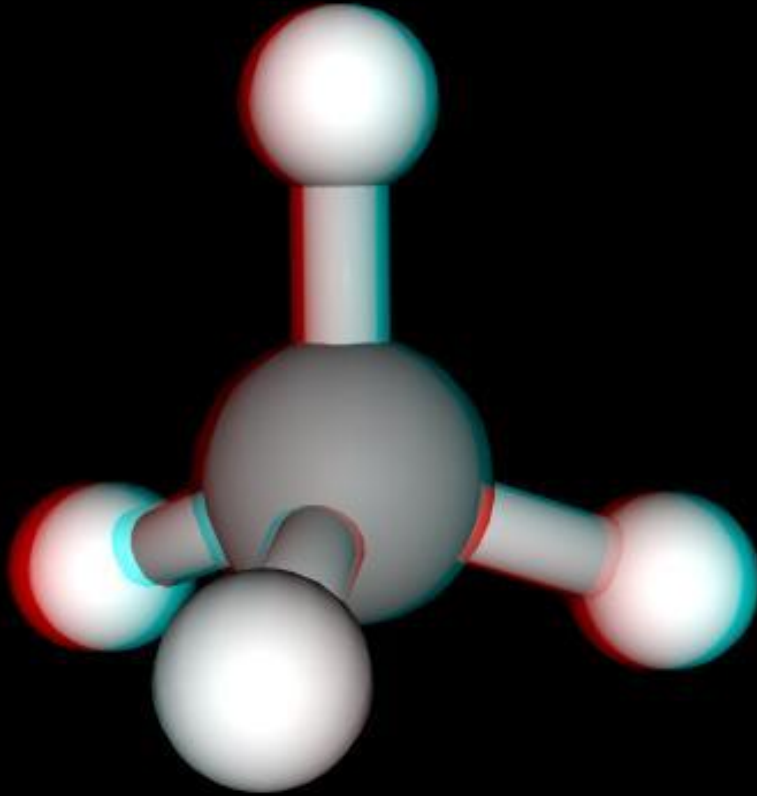


The background is a chalkboard filled with handwritten mathematical notes in white and red chalk. The notes include various symbols, equations, and diagrams. A prominent red rectangular box is centered on the board, containing the text 'Moléculas 3D'.

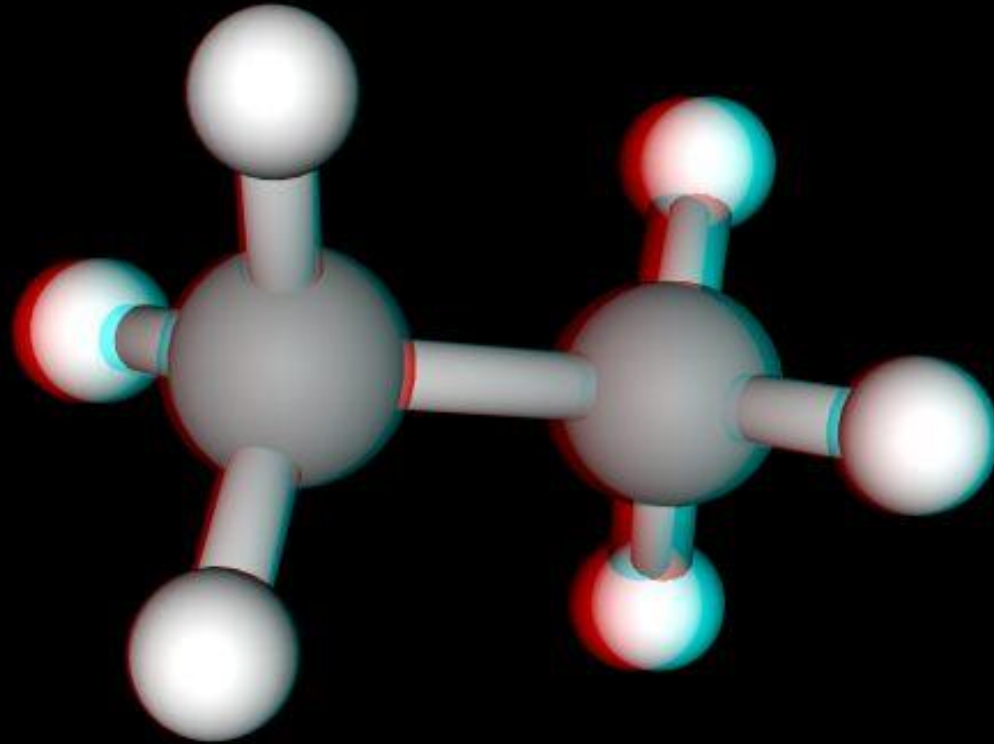
Moléculas 3D

Hidrocarboneto
Geometria tetraédrica



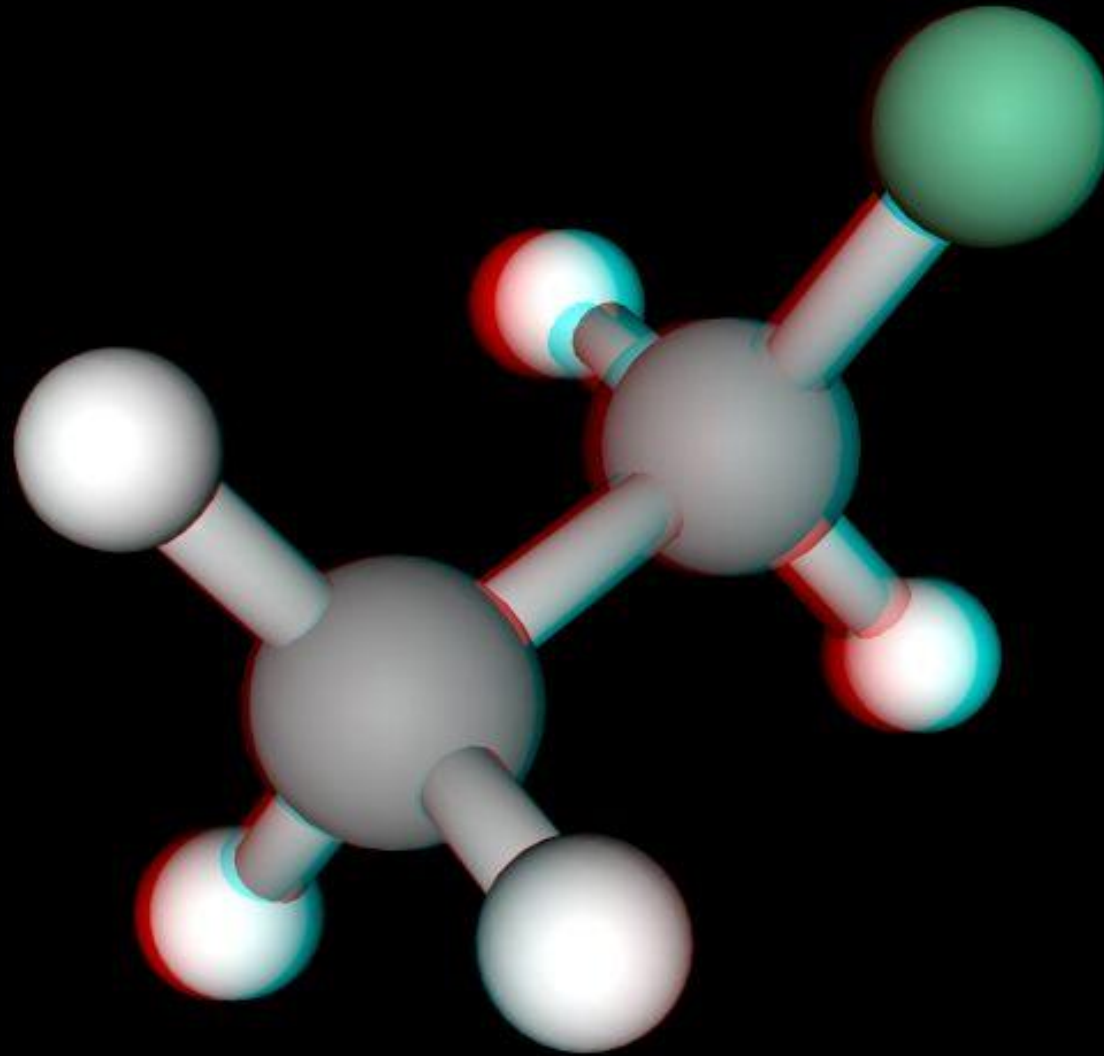
Metano
CH₄

Hidrocarboneto



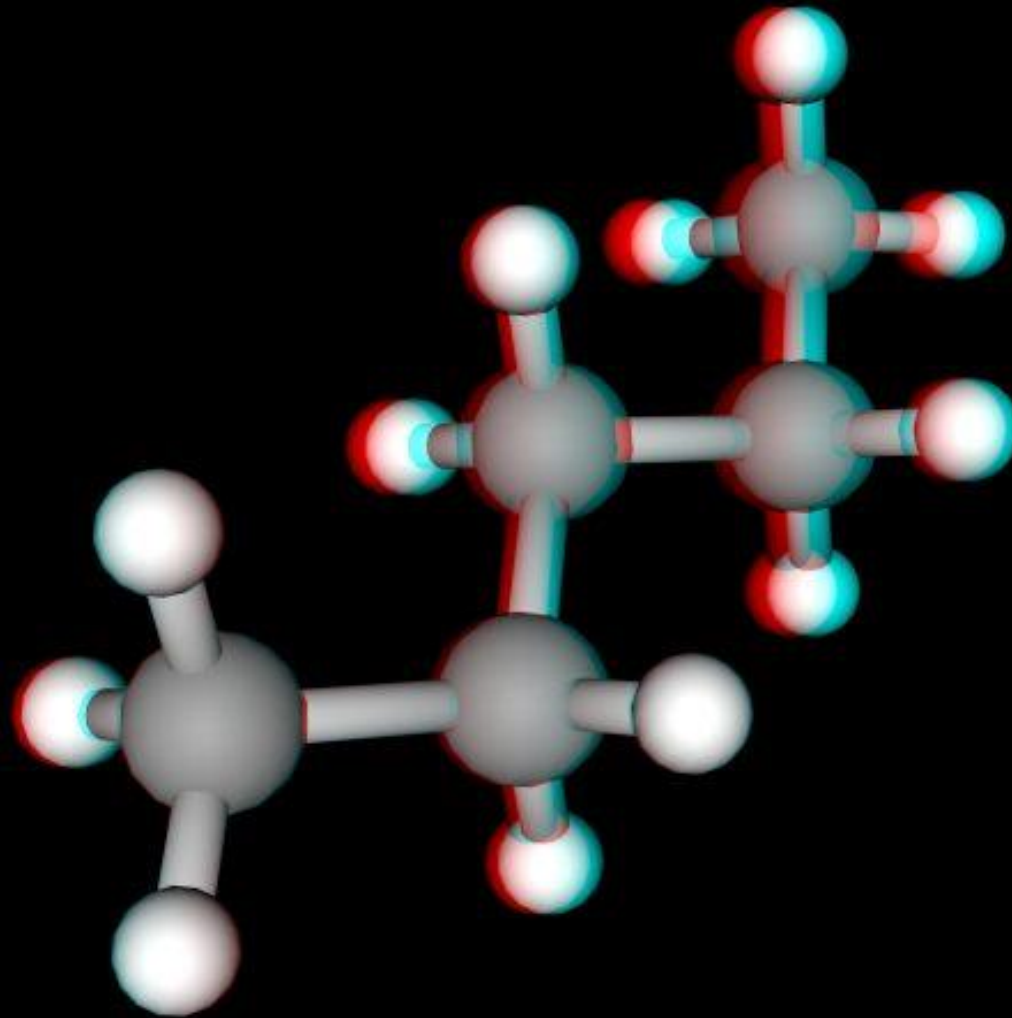
Etano
 CH_3CH_3

Hidrocarboneto halogenado



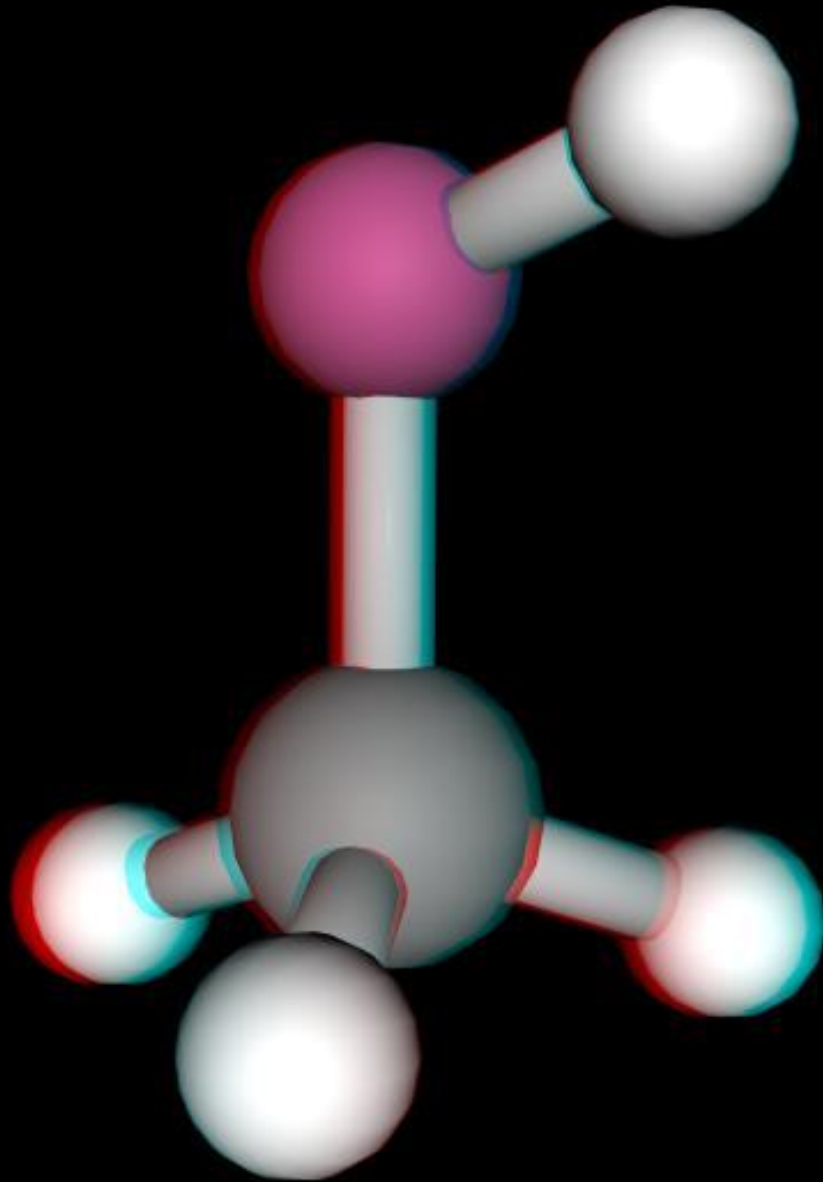
Fluoretano
 $\text{CH}_3\text{CH}_2\text{F}$

Hidrocarboneto



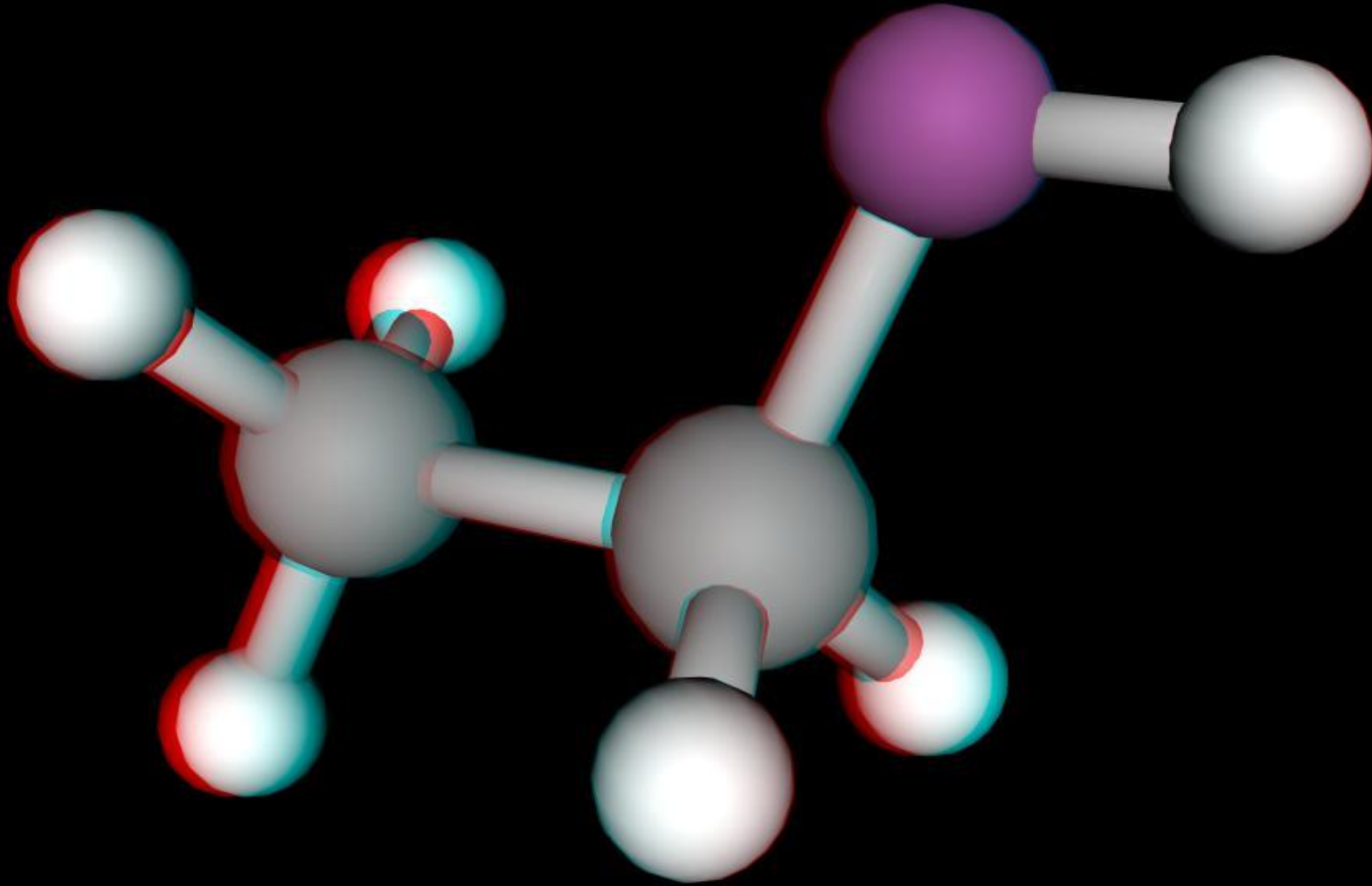
Pentano
 $\text{CH}_3\text{CH}_2\text{CH}_2\text{CH}_2\text{CH}_3$

Álcool



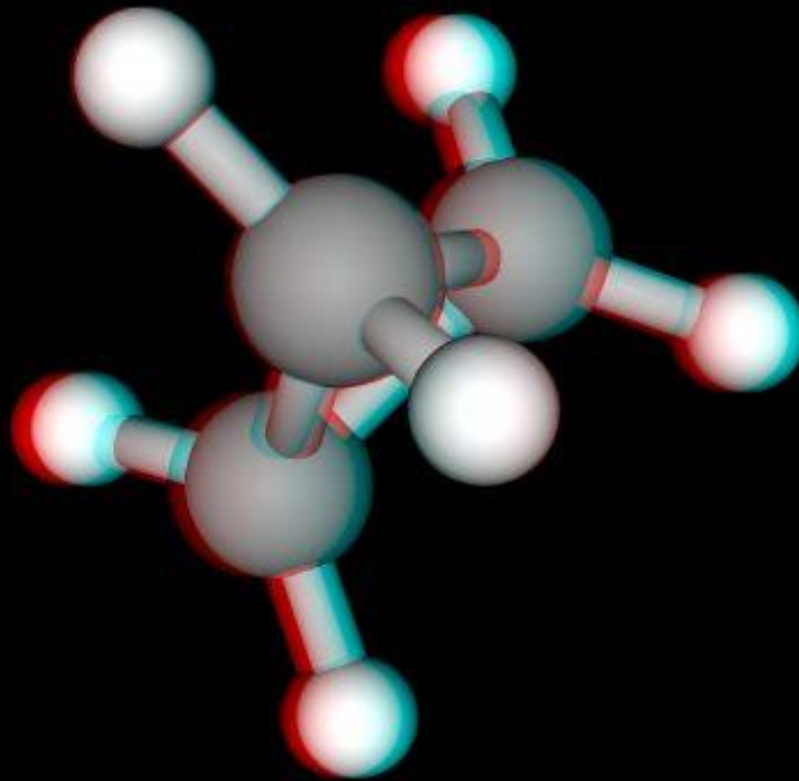
Metanol
 CH_3OH

Álcool



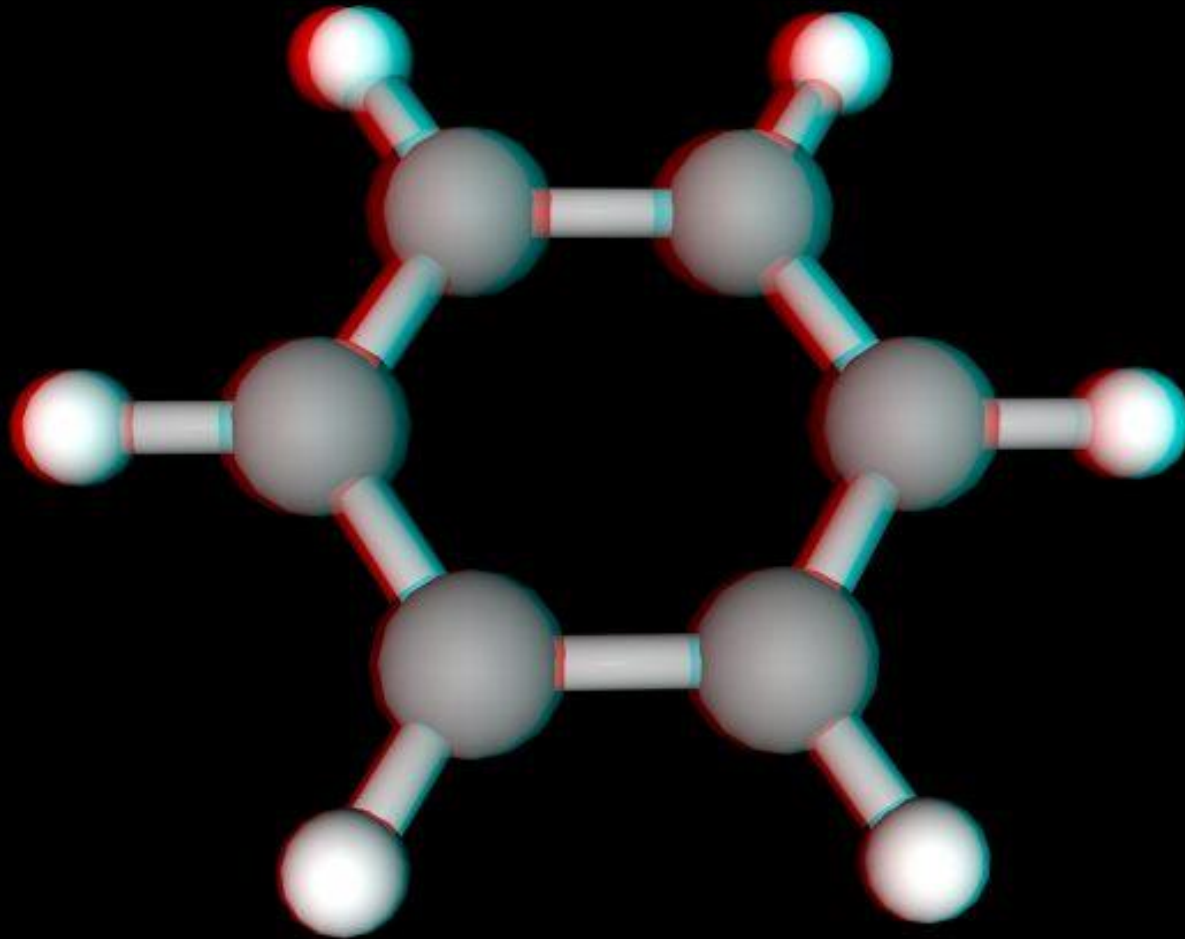
Etanol
 $\text{CH}_3\text{CH}_2\text{OH}$

Hidrocarboneto cíclico

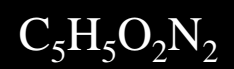
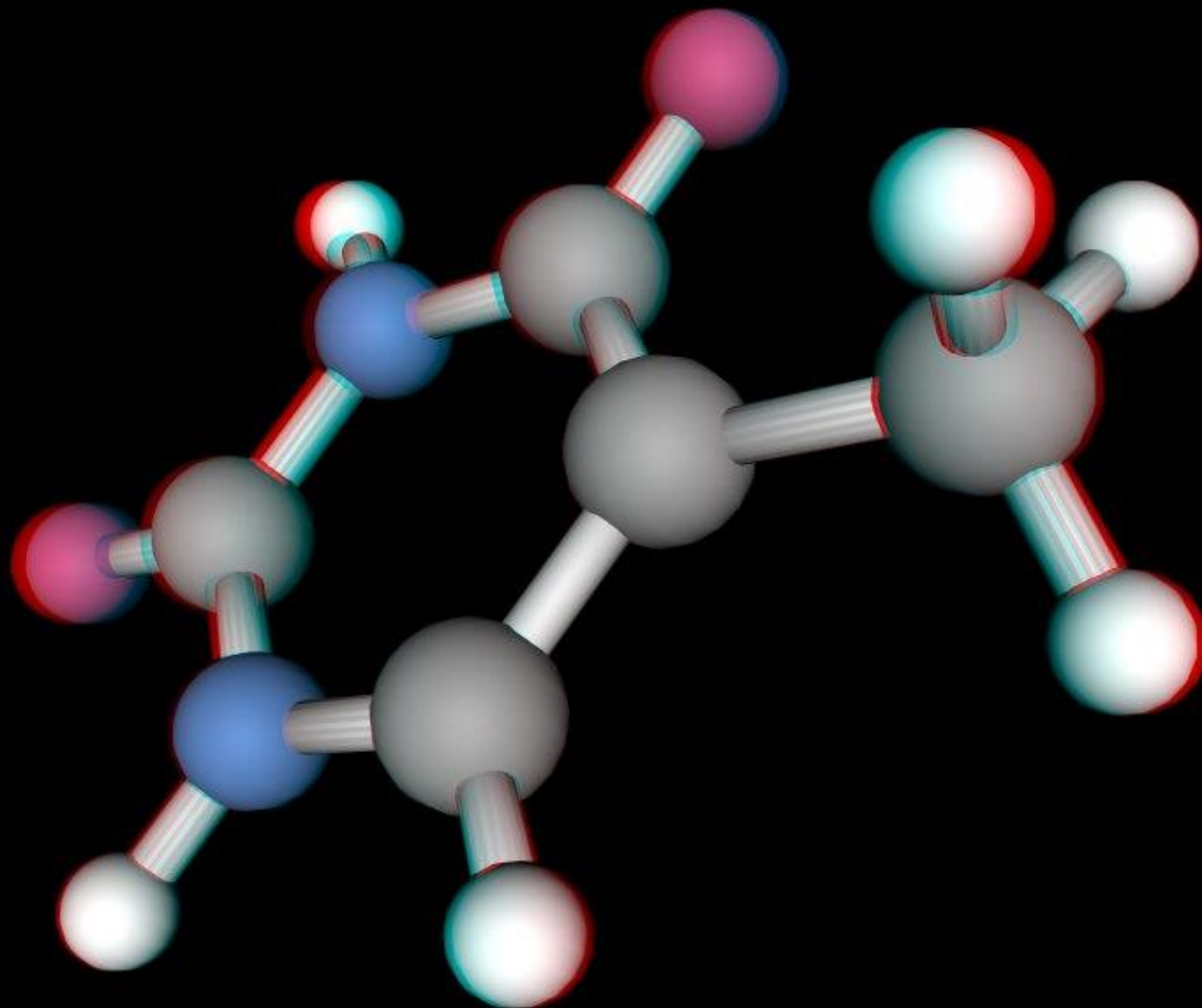


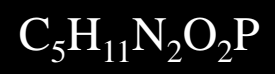
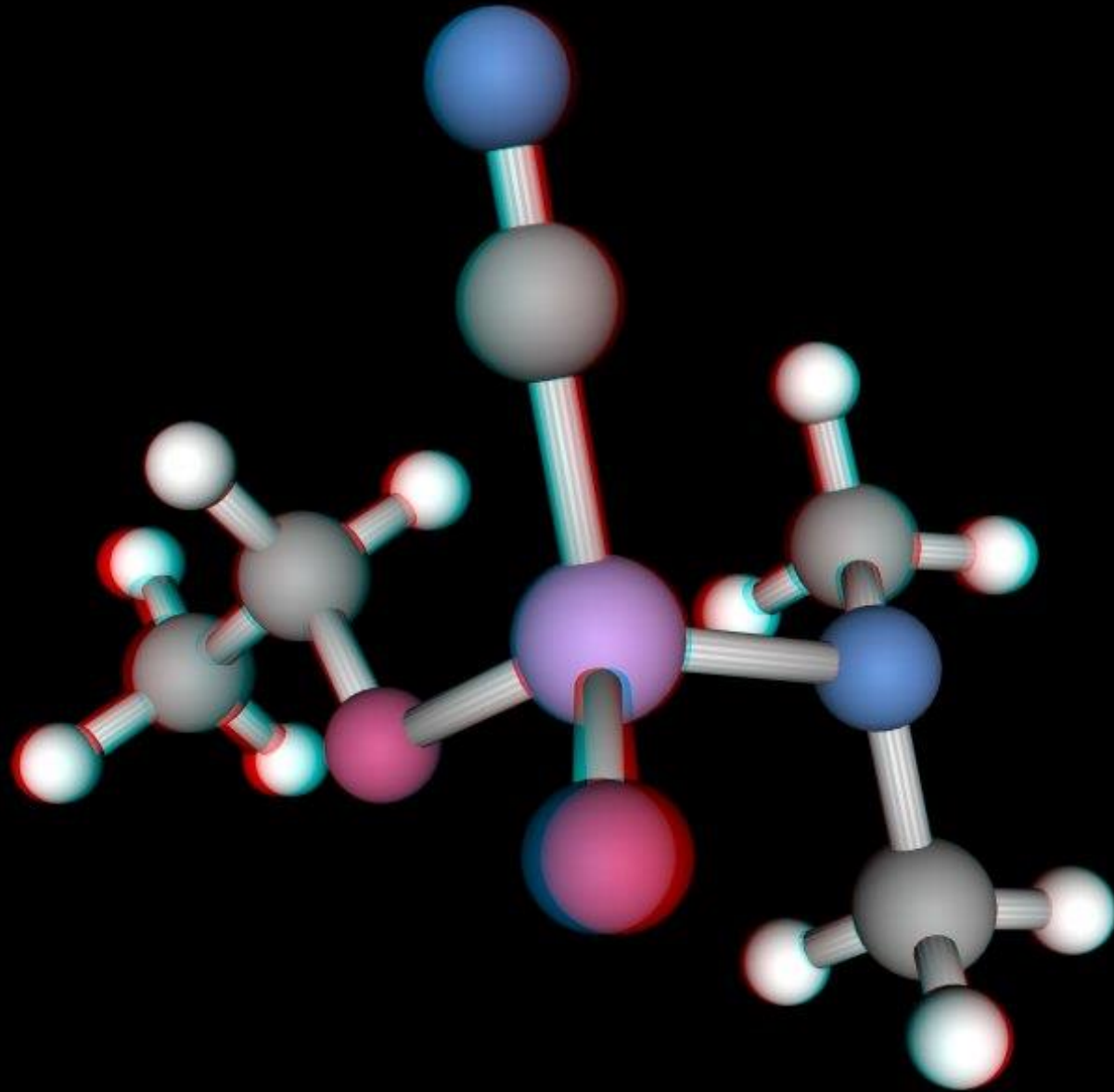
Ciclopropano
 $\text{CH}_2\text{CH}_2\text{CH}_2$

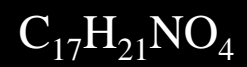
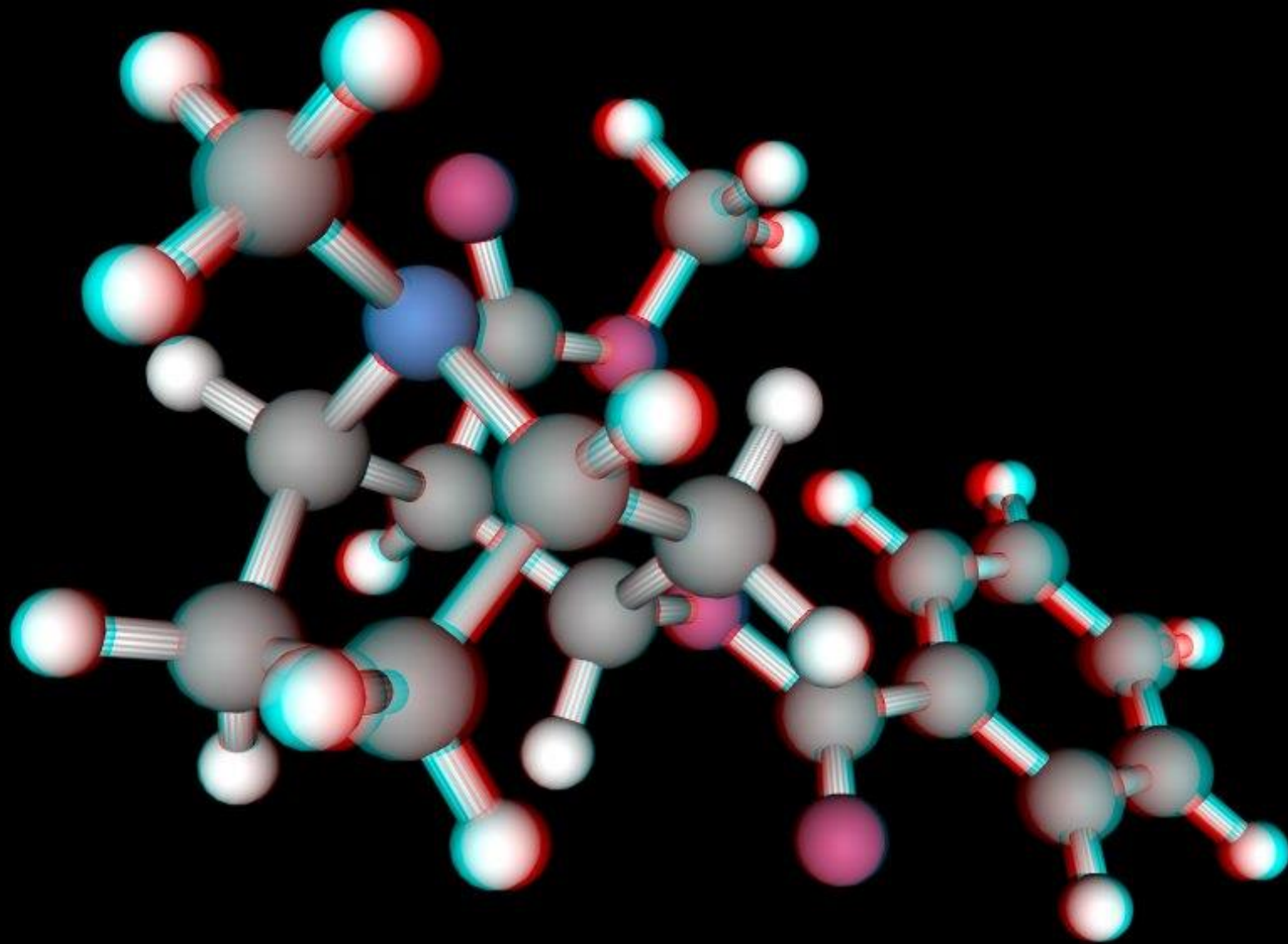
Hidrocarboneto cíclico

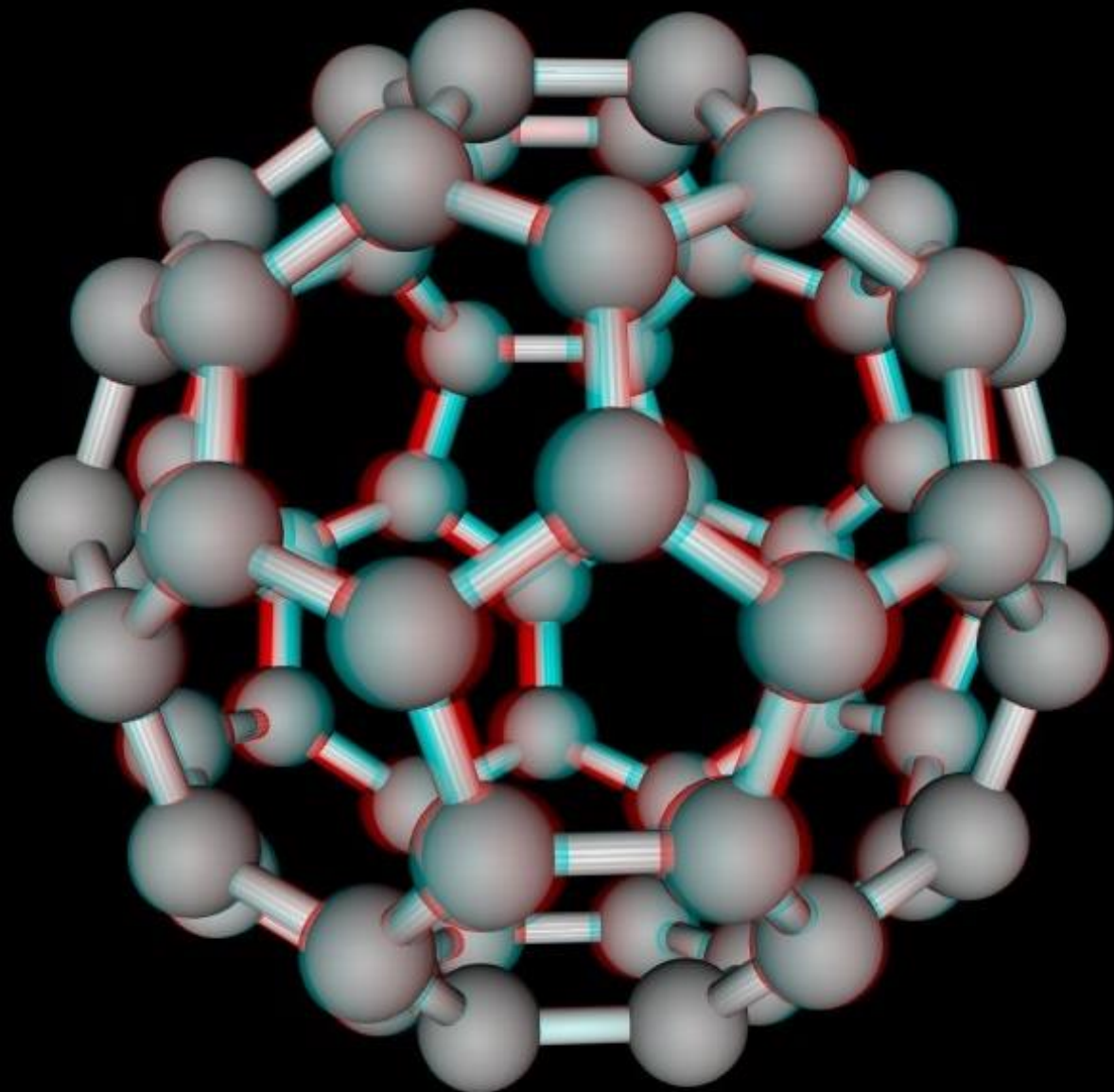


Benzeno
 C_6H_6

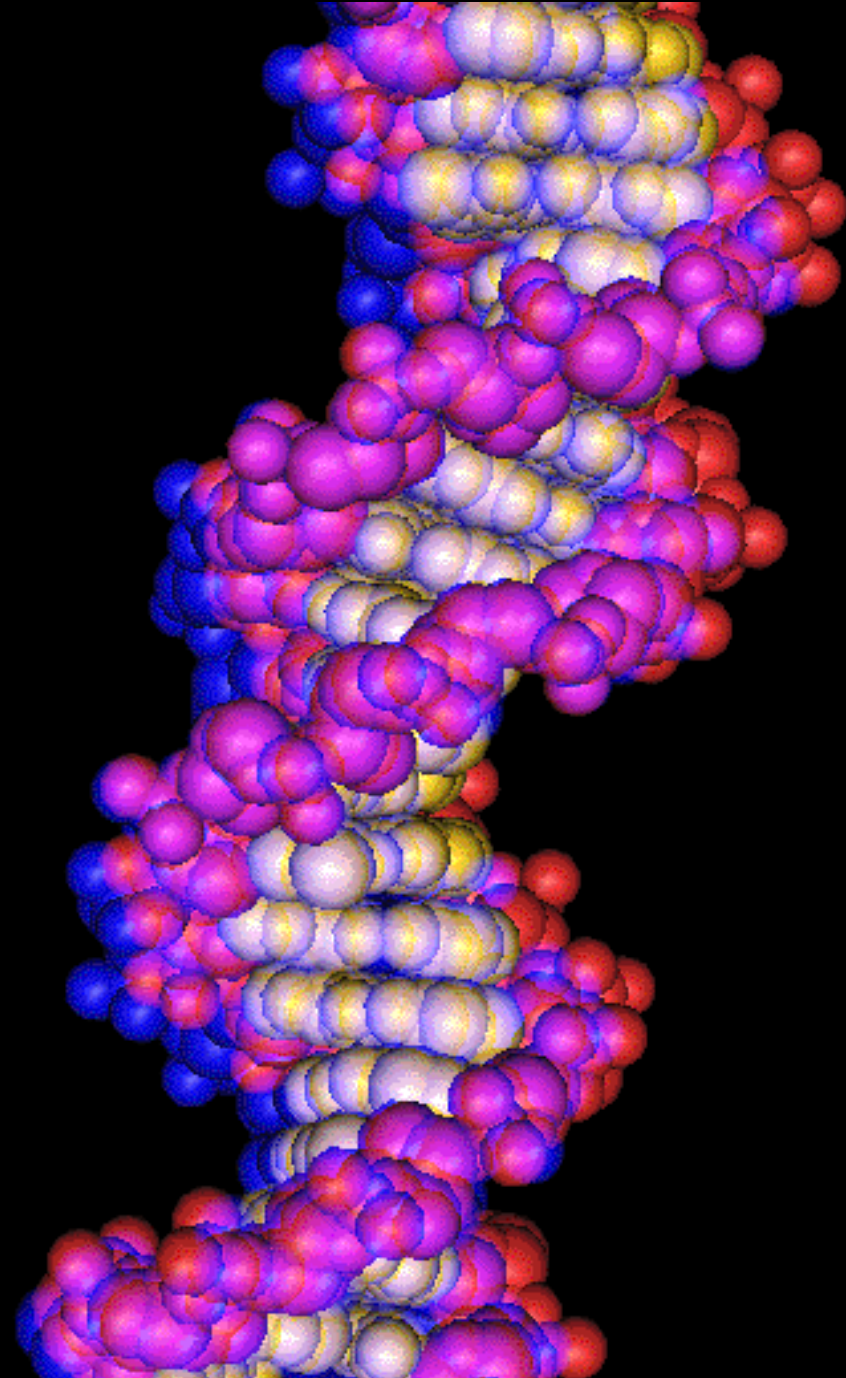




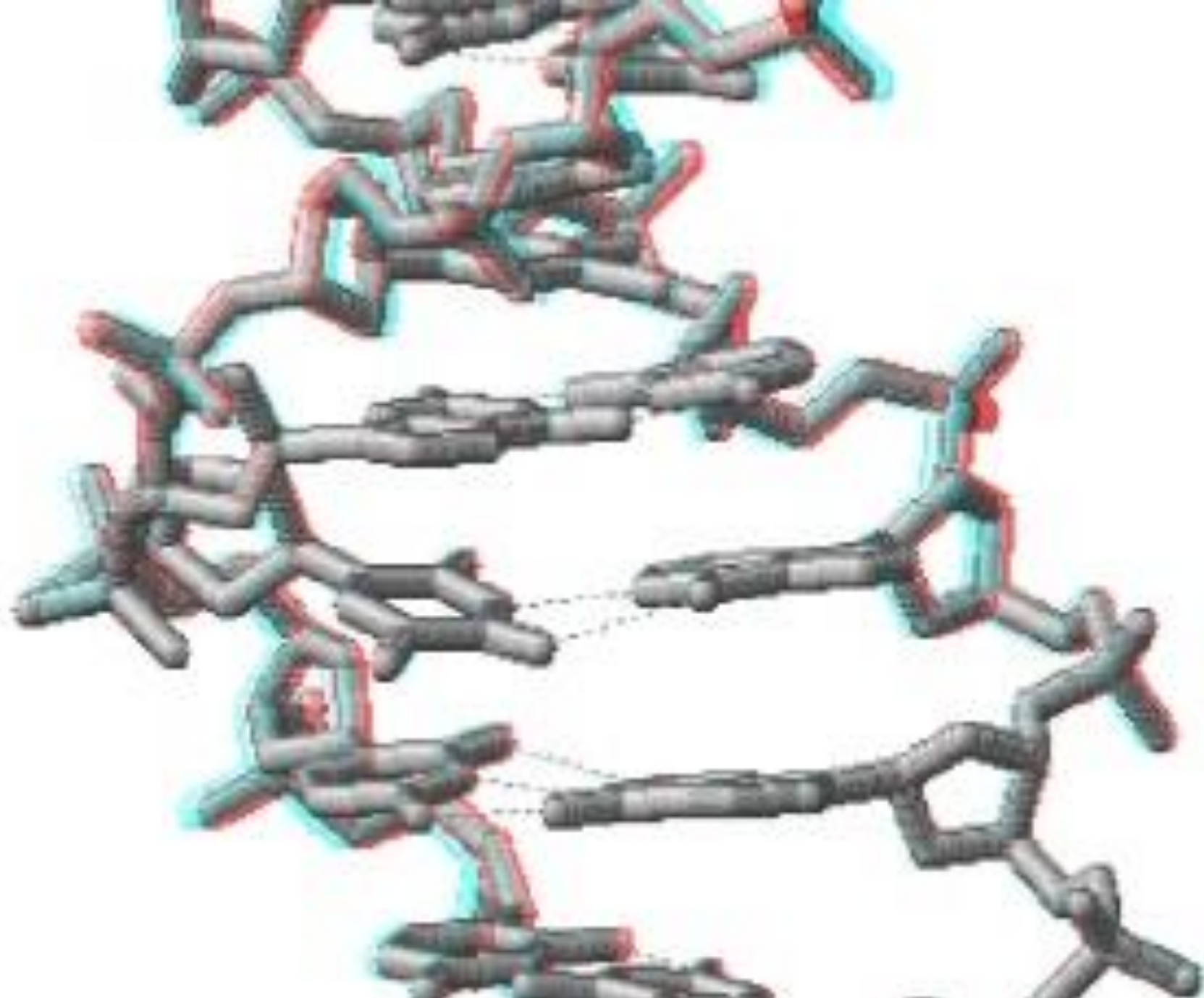




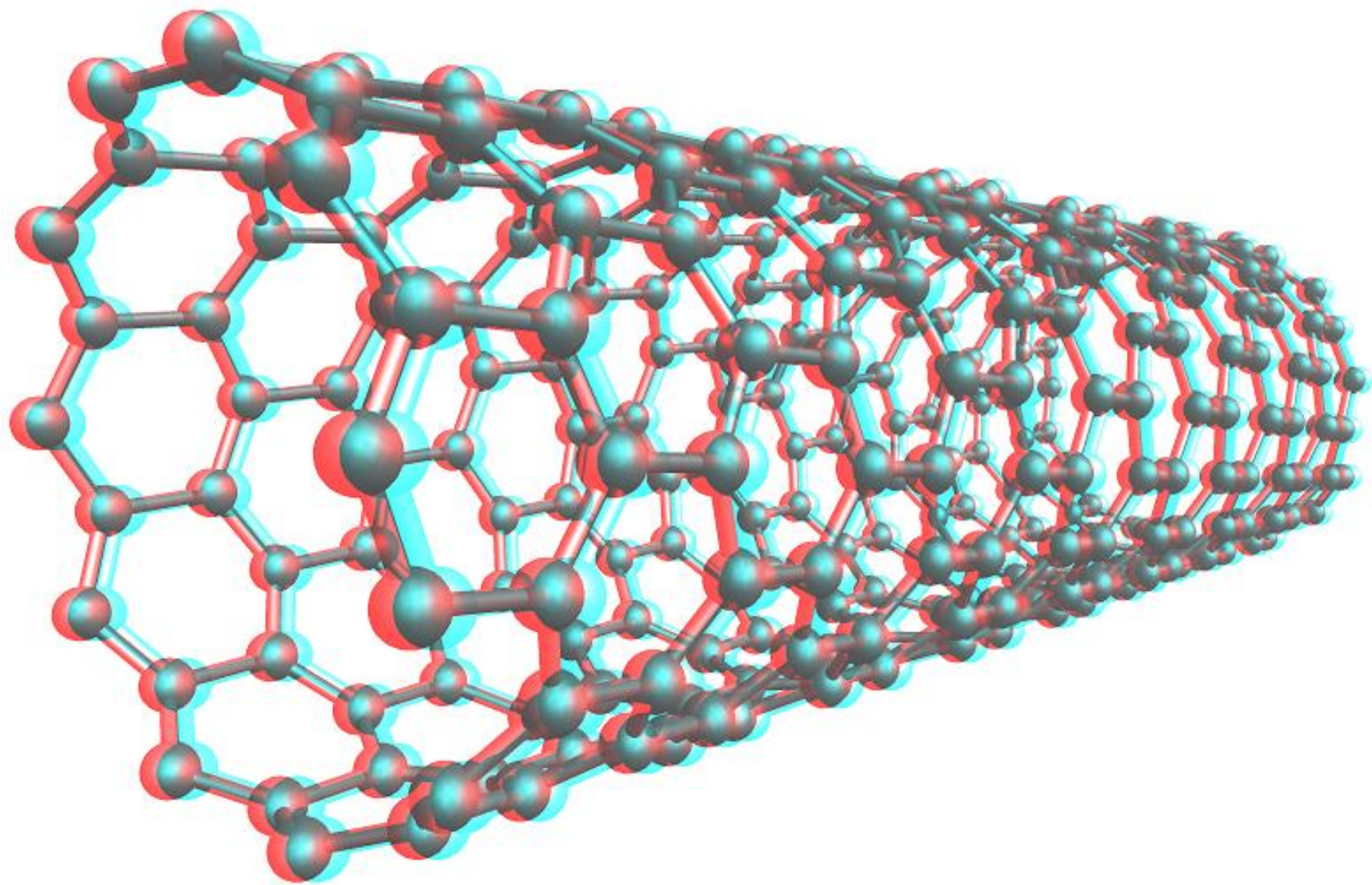
C_{60}



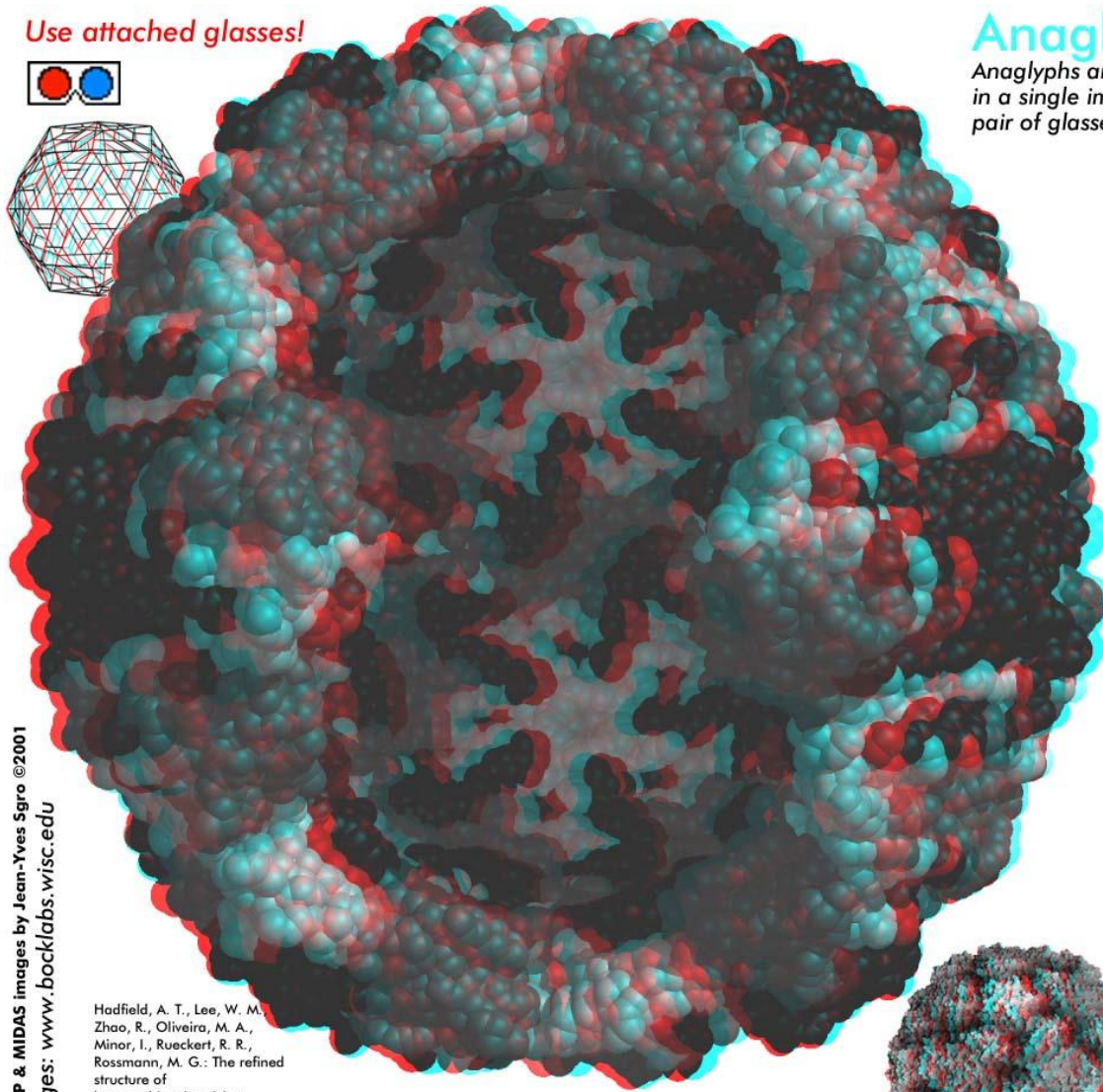
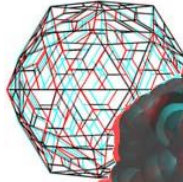
DNA



DNA

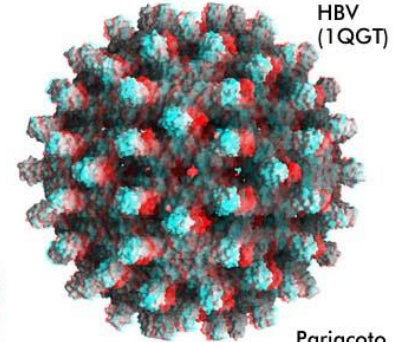


Use attached glasses!

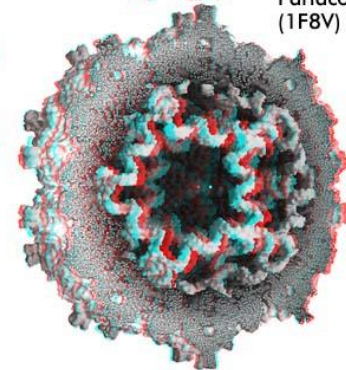


Anaglyphic Stereo

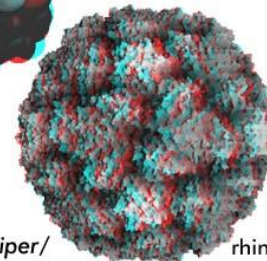
Anaglyphs are stereo pairs combined together in a single image viewed with a simple red/blue pair of glasses to see the image in 3D



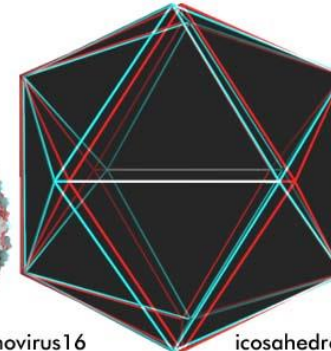
HBV
(1QGT)



Pariacoto
(1F8V)



rhinovirus16



icosahedron

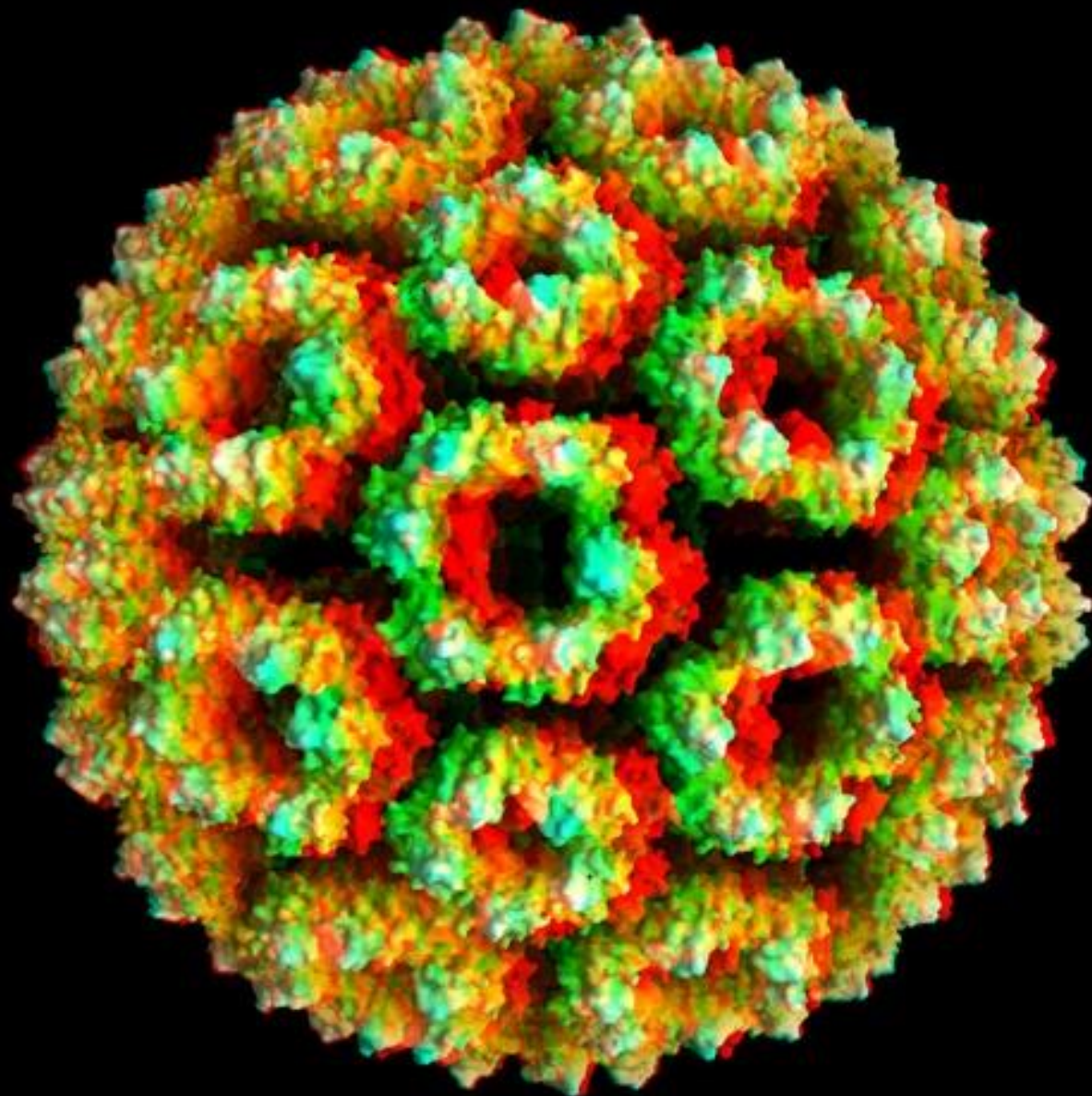
GRASP & MIDAS images by Jean-Yves Sgro ©2001
Images: www.bocklabs.wisc.edu



Hadfield, A. T., Lee, W. M., Zhao, R., Oliveira, M. A., Minor, I., Rueckert, R. R., Rossmann, M. G.: The refined structure of human rhinovirus 16 at 2.15 Å resolution: implications for the viral life cycle. *Structure* 5 pp. 427 (1997)

Rhinovirus 16 PDB_ID: 1AYM

Coordinates from: PDB: www.rcsb.org/pdb/ VIPER: mmtsbo.scripps.edu/viper/



Virus

